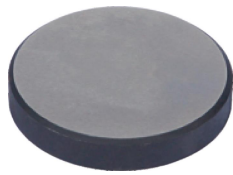
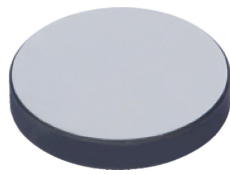


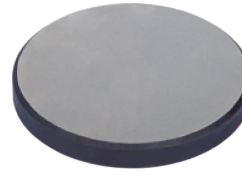
## HARDNESS TEST BLOCKS



Rockwell



Vickers



Brinell



Leeb



Micro-Vickers



Knoop



Ultrasonic



Shore

■ Supplied with manufacturer inspection certificate

### Rockwell hardness test blocks

| Code       | Type | Hardness | Dimension *                               |
|------------|------|----------|---|
| HDT-B-HRA  | HRA  | 80-84    | diameter: (60±1)mm<br>thickness: (11±1)mm |
| HDT-B-HRB  | HRB  | 88-100   |   |
| HDT-B-HRC1 | HRC  | 20-30    |   |
| HDT-B-HRC2 | HRC  | 35-55    |   |
| HDT-B-HRC3 | HRC  | 60-70    |   |
| HDT-B-HRD1 | HRD  | 40-47    |   |
| HDT-B-HRD2 | HRD  | 55-63    |   |
| HDT-B-HRD3 | HRD  | 70-75    |   |
| HDT-B-HRE  | HRE  | 107-114  |   |
| HDT-B-HRF  | HRF  | 105-114  |   |
| HDT-B-HRG1 | HRG  | 57-82    |   |
| HDT-B-HRG2 | HRG  | 80-94    |   |

### Rockwell superficial hardness test blocks

| Code         | Type  | Hardness | Dimension *                               |
|--------------|-------|----------|---|
| HDT-B-HR15N1 | HR15N | 70-77    | diameter: (60±1)mm<br>thickness: (11±1)mm |
| HDT-B-HR15N2 | HR15N | 78-88    |   |
| HDT-B-HR15N3 | HR15N | 89-91    |   |
| HDT-B-HR30N1 | HR30N | 42-54    |   |
| HDT-B-HR30N2 | HR30N | 55-73    |   |
| HDT-B-HR30N3 | HR30N | 74-80    |   |
| HDT-B-HR45N1 | HR45N | 20-31    |   |
| HDT-B-HR45N2 | HR45N | 32-61    |   |
| HDT-B-HR45N3 | HR45N | 63-70    |   |
| HDT-B-HR15T  | HR15T | 88-93    |   |
| HDT-B-HR30T  | HR30T | 73-82    |   |
| HDT-B-HR45T  | HR45T | 58-72    |   |

### Leeb hardness test blocks

| Code       | Type | Hardness | Dimension *                                |
|------------|------|----------|--|
| HDT-B-HLD1 | HLD  | 490-570  | diameter: (90±1)mm<br>thickness: (55±1)mm  |
| HDT-B-HLD2 | HLD  | 590-670  |  |
| HDT-B-HLD3 | HLD  | 750-830  |  |
| HDT-B-HLG1 | HLG  | 460-540  | diameter: (120±1)mm<br>thickness: (70±1)mm |
| HDT-B-HLG2 | HLG  | 550-630  |  |

### Shore hardness test blocks

| Code     | Type | Hardness                          | Dimension * |
|----------|------|-----------------------------------|-------------|
| HDT-B-SA | SA   | 6pcs/set (30, 40, 50, 60, 70, 80) | Ø50×7mm     |
| HDT-B-SD | SD   | 3pcs/set (15, 30, 90)             | 50×50×7mm   |

### Vickers hardness test blocks

| Code         | Type  | Hardness | Dimension *                               |
|--------------|-------|----------|---|
| HDT-B-HV5A   | HV5   | 175-200  | diameter: (60±1)mm<br>thickness: (11±1)mm |
| HDT-B-HV5B   | HV5   | 200-300  |   |
| HDT-B-HV5C   | HV5   | 300-400  |   |
| HDT-B-HV5D   | HV5   | 400-500  |   |
| HDT-B-HV5E   | HV5   | 500-600  |   |
| HDT-B-HV5F   | HV5   | 600-700  |   |
| HDT-B-HV5G   | HV5   | 700-750  |   |
| HDT-B-HV10A  | HV10  | 175-200  |   |
| HDT-B-HV10B  | HV10  | 200-300  |   |
| HDT-B-HV10C  | HV10  | 300-400  |   |
| HDT-B-HV10D  | HV10  | 400-500  |   |
| HDT-B-HV10E  | HV10  | 500-600  |   |
| HDT-B-HV10F  | HV10  | 600-700  |   |
| HDT-B-HV10G  | HV10  | 700-750  |   |
| HDT-B-HV30A  | HV30  | 175-200  |   |
| HDT-B-HV30B  | HV30  | 200-300  |   |
| HDT-B-HV30C  | HV30  | 300-400  |   |
| HDT-B-HV30D  | HV30  | 400-500  |   |
| HDT-B-HV30E  | HV30  | 500-600  |   |
| HDT-B-HV30F  | HV30  | 600-700  |   |
| HDT-B-HV30G  | HV30  | 700-750  |   |
| HDT-B-HV50A  | HV50  | 175-200  |   |
| HDT-B-HV50B  | HV50  | 200-300  |   |
| HDT-B-HV50C  | HV50  | 300-400  |   |
| HDT-B-HV50D  | HV50  | 400-500  |   |
| HDT-B-HV50E  | HV50  | 500-600  |   |
| HDT-B-HV50F  | HV50  | 600-700  |   |
| HDT-B-HV50G  | HV50  | 700-750  |   |
| HDT-B-HV100A | HV100 | 175-200  |   |
| HDT-B-HV100B | HV100 | 200-300  |   |
| HDT-B-HV100C | HV100 | 300-400  |   |
| HDT-B-HV100D | HV100 | 400-500  |   |
| HDT-B-HV100E | HV100 | 500-600  |   |
| HDT-B-HV100F | HV100 | 600-700  |   |
| HDT-B-HV100G | HV100 | 700-750  |   |

**Micro-Vickers hardness test blocks**

| Code         | Type   | Hardness | Dimension *  |
|--------------|--------|----------|--|
| HDT-B-HV005A | HV0.05 | 200-300  | diameter:<br>(25±1)mm<br><br>thickness:<br>(6±2)mm |
| HDT-B-HV005B | HV0.05 | 300-400  |  |
| HDT-B-HV005C | HV0.05 | 400-500  |  |
| HDT-B-HV005D | HV0.05 | 500-600  |  |
| HDT-B-HV005E | HV0.05 | 600-700  |  |
| HDT-B-HV005F | HV0.05 | 700-750  |  |
| HDT-B-HV01A  | HV0.1  | 200-300  |  |
| HDT-B-HV01B  | HV0.1  | 300-400  |  |
| HDT-B-HV01C  | HV0.1  | 400-500  |  |
| HDT-B-HV01D  | HV0.1  | 500-600  |  |
| HDT-B-HV01E  | HV0.1  | 600-700  |  |
| HDT-B-HV01F  | HV0.1  | 700-750  |  |
| HDT-B-HV02A  | HV0.2  | 200-300  |  |
| HDT-B-HV02B  | HV0.2  | 300-400  |  |
| HDT-B-HV02C  | HV0.2  | 400-500  |  |
| HDT-B-HV02D  | HV0.2  | 500-600  |  |
| HDT-B-HV02E  | HV0.2  | 600-700  |  |
| HDT-B-HV02F  | HV0.2  | 700-750  |  |
| HDT-B-HV03A  | HV0.3  | 200-300  |  |
| HDT-B-HV03B  | HV0.3  | 300-400  |  |
| HDT-B-HV03C  | HV0.3  | 400-500  |  |
| HDT-B-HV03D  | HV0.3  | 500-600  |  |
| HDT-B-HV03E  | HV0.3  | 600-700  |  |
| HDT-B-HV03F  | HV0.3  | 700-750  |  |
| HDT-B-HV05A  | HV0.5  | 200-300  |  |
| HDT-B-HV05B  | HV0.5  | 300-400  |  |
| HDT-B-HV05C  | HV0.5  | 400-500  |  |
| HDT-B-HV05D  | HV0.5  | 500-600  |  |
| HDT-B-HV05E  | HV0.5  | 600-700  |  |
| HDT-B-HV05F  | HV0.5  | 700-750  |  |
| HDT-B-HV1A   | HV1    | 200-300  |  |
| HDT-B-HV1B   | HV1    | 300-400  |  |
| HDT-B-HV1C   | HV1    | 400-500  |  |
| HDT-B-HV1D   | HV1    | 500-600  |  |
| HDT-B-HV1E   | HV1    | 600-700  |  |
| HDT-B-HV1F   | HV1    | 700-750  |  |

**Knoop hardness test blocks**

| Code         | Type   | Hardness | Dimension *  |
|--------------|--------|----------|--|
| HDT-B-HK005A | HK0.05 | 200-300  | diameter:<br>(25±1)mm<br><br>thickness:<br>(6±2)mm |
| HDT-B-HK005B | HK0.05 | 400-500  |  |
| HDT-B-HK005C | HK0.05 | 700-800  |  |
| HDT-B-HK01A  | HK0.1  | 200-300  |  |
| HDT-B-HK01B  | HK0.1  | 400-500  |  |
| HDT-B-HK01C  | HK0.1  | 700-800  |  |
| HDT-B-HK02A  | HK0.2  | 200-300  |  |
| HDT-B-HK02B  | HK0.2  | 400-500  |  |
| HDT-B-HK02C  | HK0.2  | 700-800  |  |
| HDT-B-HK03A  | HK0.3  | 200-300  |  |
| HDT-B-HK03B  | HK0.3  | 400-500  |  |
| HDT-B-HK03C  | HK0.3  | 700-800  |  |
| HDT-B-HK05A  | HK0.5  | 200-300  |  |
| HDT-B-HK05B  | HK0.5  | 400-500  |  |
| HDT-B-HK05C  | HK0.5  | 700-800  |  |
| HDT-B-HK1A   | HK1    | 200-300  |  |
| HDT-B-HK1B   | HK1    | 400-500  |  |
| HDT-B-HK1C   | HK1    | 700-800  |  |

\* The above dimensions are for reference only, subject to actual supply

**Brinell hardness test blocks**

| Code         | Type         | Hardness | Dimension *                                       |
|--------------|--------------|----------|---|
| HDT-B-HB10A1 | HBW10/3000   | 100-200  | diameter:<br>(100±1)mm<br><br>thickness:<br>>16mm |
| HDT-B-HB10A2 | HBW10/3000   | 200-300  |   |
| HDT-B-HB10A3 | HBW10/3000   | 300-400  |   |
| HDT-B-HB10A4 | HBW10/3000   | 400-500  |   |
| HDT-B-HB10A5 | HBW10/3000   | 500-600  |   |
| HDT-B-HB10A6 | HBW10/3000   | 600-650  |   |
| HDT-B-HB10B1 | HBW10/1500   | 100-200  |   |
| HDT-B-HB10B2 | HBW10/1500   | 200-300  |   |
| HDT-B-HB10B3 | HBW10/1500   | 300-400  |   |
| HDT-B-HB10B4 | HBW10/1500   | 400-500  |   |
| HDT-B-HB10B5 | HBW10/1500   | 500-600  |   |
| HDT-B-HB10B6 | HBW10/1500   | 600-650  |   |
| HDT-B-HB10C1 | HBW10/1000   | 90-200   |   |
| HDT-B-HB10C2 | HBW10/1000   | 200-300  |   |
| HDT-B-HB10C3 | HBW10/1000   | 300-400  |   |
| HDT-B-HB10C4 | HBW10/1000   | 400-450  |   |
| HDT-B-HB10D1 | HBW10/500    | 90-200   |   |
| HDT-B-HB10D2 | HBW10/500    | 200-300  |   |
| HDT-B-HB10D3 | HBW10/500    | 300-400  |   |
| HDT-B-HB10D4 | HBW10/500    | 400-450  |   |
| HDT-B-HB25A1 | HBW2.5/187.5 | 100-200  | diameter:<br>(64±1)mm<br><br>thickness:<br>>6mm   |
| HDT-B-HB25A2 | HBW2.5/187.5 | 200-300  |   |
| HDT-B-HB25A3 | HBW2.5/187.5 | 300-400  |   |
| HDT-B-HB25A4 | HBW2.5/187.5 | 400-500  |   |
| HDT-B-HB25A5 | HBW2.5/187.5 | 500-600  |   |
| HDT-B-HB25A6 | HBW2.5/187.5 | 600-650  |   |
| HDT-B-HB25B1 | HBW2.5/62.5  | 90-200   |   |
| HDT-B-HB25B2 | HBW2.5/62.5  | 200-300  |   |
| HDT-B-HB25B3 | HBW2.5/62.5  | 300-400  |   |
| HDT-B-HB25B4 | HBW2.5/62.5  | 400-450  |   |
| HDT-B-HB5A1  | HBW5/750     | 100-200  | diameter:<br>(100±1)mm<br><br>thickness:<br>>12mm |
| HDT-B-HB5A2  | HBW5/750     | 200-300  |   |
| HDT-B-HB5A3  | HBW5/750     | 300-400  |   |
| HDT-B-HB5A4  | HBW5/750     | 400-500  |   |
| HDT-B-HB5A5  | HBW5/750     | 500-600  |   |
| HDT-B-HB5A6  | HBW5/750     | 600-650  |   |
| HDT-B-HB5B1  | HBW5/250     | 90-200   | diameter:<br>(64±1)mm<br>thickness:<br>>6mm       |
| HDT-B-HB5B2  | HBW5/250     | 200-300  |   |
| HDT-B-HB5B3  | HBW5/250     | 300-400  |   |
| HDT-B-HB5B4  | HBW5/250     | 400-450  |   |

**Ultrasonic hardness test blocks**

| Code         | Type       | Hardness | Dimension *                                      |
|--------------|------------|----------|--|
| HDT-B-HRCU1  | HRC        | 20-30    | diameter:<br>(90±1)mm<br><br>thickness:<br>>16mm |
| HDT-B-HRCU2  | HRC        | 35-55    |  |
| HDT-B-HRCU3  | HRC        | 60-70    |  |
| HDT-B-HV2U8  | HV2        | 200-300  |  |
| HDT-B-HV2U9  | HV2        | 400-500  |  |
| HDT-B-HV2U10 | HV2        | 700-750  |  |
| HDT-B-HV5U1  | HV5        | 200-300  |  |
| HDT-B-HV5U2  | HV5        | 400-500  |  |
| HDT-B-HV5U3  | HV5        | 700-750  |  |
| HDT-B-HB10U1 | HBW10/1000 | 90-200   |  |
| HDT-B-HB10U2 | HBW10/3000 | 200-300  |  |
| HDT-B-HB10U3 | HBW10/3000 | 300-400  |  |
| HDT-B-HB10U4 | HBW10/3000 | 400-500  |  |

**Hammer impact brinell hardness bar**

| Code        | Type     | Hardness | Dimension * |
|-------------|----------|----------|-------------|
| HDT-B-HB5C1 | HBS5/750 | 177-217  | 12×12×150mm |